

Exercise 11.1 - Transpose the following chord pattern into the minor keys suggested by the given key signatures and play all transpositions with the left hand at the piano

i iv⁶ V⁶ i

Exercise 11.2 - Analyze the following excerpts with Roman numerals and identify the cadences at the fermatas

Hymn "Go to Dark Gethsemane"

Hymn "Throned upon the Awful Tree"

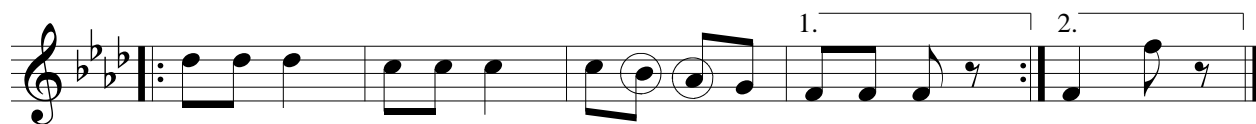
Exercise 11.4 - Harmonize the following melodies

HINTS: - Play and sing the melody while thinking about its latent harmonic content

- Write Roman numerals beneath

- Play the melody in the right hand with your harmonization in the left hand (refer to exercise 11.1), correcting mistakes and refining your choices

Traditional Song "Sascha Took the Fifth"



Traditional Song "Frost Laid on a Spring Night"



Spiritual "Joshua fought the Battle of Jericho"



A musical score for a hymn in G major (three sharps) and 4/4 time. It consists of four staves of music. The first staff begins with a treble clef and a key signature of three sharps. The melody is written in a simple, hymn-like style with quarter and eighth notes. The second staff continues the melody, featuring a whole note rest in the fourth measure. The third staff continues the melody with eighth notes. The fourth staff concludes the piece with a double bar line.

Hymn "For Thee, Our Dear Dear Country"

A musical score for the hymn "For Thee, Our Dear Dear Country" in B-flat major (two flats) and 4/4 time. It consists of two staves of music. The first staff begins with a treble clef and a key signature of two flats. The melody is written in a simple, hymn-like style with quarter and eighth notes. The second staff continues the melody, featuring a whole note rest in the fourth measure. The piece concludes with a double bar line.

Exercise 11.5 - Compose a melody in F-sharp minor that fits the following scheme:

i iv i _____ iv i V i V _____ i iv V i

