

Exercise 5.1 - Analyze the following hymns with Roman numerals and identify the cadences at the fermatas

"There is a Book, Who Runs May Read"

First system of the hymn "There is a Book, Who Runs May Read". The music is in G major (one sharp) and 4/4 time. It consists of two staves: a treble clef staff and a bass clef staff. The melody in the treble staff begins with a half note G4, followed by quarter notes A4, B4, and C5. A fermata is placed over the final C5. The bass staff provides a simple accompaniment with quarter notes G3, A3, B3, and C4.

Second system of the hymn "There is a Book, Who Runs May Read". The melody continues with quarter notes D5, E5, and F5, followed by a half note G5 with a fermata. The bass staff continues with quarter notes G3, A3, B3, and C4.

"Lord Jesus, Think on Me"

First system of the hymn "Lord Jesus, Think on Me". The music is in B-flat major (two flats) and 4/4 time. It consists of two staves: a treble clef staff and a bass clef staff. The melody in the treble staff begins with a half note Bb4, followed by quarter notes C5, D5, and E5. A fermata is placed over the final E5. The bass staff provides a simple accompaniment with quarter notes Bb3, C4, D4, and E4.

Second system of the hymn "Lord Jesus, Think on Me". The melody continues with quarter notes F5, G5, and A5, followed by a half note Bb5 with a fermata. The bass staff continues with quarter notes Bb3, C4, D4, and E4.

Exercise 5.2 - Analyze this piano arrangement of "Summer is a-coming in" and identify the cadence

The first system of the piano arrangement consists of two staves. The treble clef staff begins with a treble clef, a key signature of one sharp (F#), and a 3/4 time signature. The melody starts on a half note G4, followed by quarter notes A4, B4, and C5. The bass clef staff begins with a bass clef and a key signature of one sharp (F#). It features a series of chords: a half note chord of G2-B2-D3, a half note chord of G2-B2-D3, and a half note chord of G2-B2-D3. The system concludes with a half note chord of G2-B2-D3.

The second system of the piano arrangement consists of two staves. The treble clef staff continues the melody with quarter notes D5, E5, and F#5. The bass clef staff features a series of chords: a half note chord of G2-B2-D3, a half note chord of G2-B2-D3, a half note chord of G2-B2-D3, a half note chord of G2-B2-D3, a half note chord of G2-B2-D3, and a half note chord of G2-B2-D3. The system concludes with a half note chord of G2-B2-D3.

The third system of the piano arrangement consists of two staves. The treble clef staff continues the melody with quarter notes G4, A4, and B4. The bass clef staff features a series of chords: a half note chord of G2-B2-D3, a half note chord of G2-B2-D3, a half note chord of G2-B2-D3, a half note chord of G2-B2-D3, a half note chord of G2-B2-D3, and a half note chord of G2-B2-D3. The system concludes with a half note chord of G2-B2-D3.

The fourth system of the piano arrangement consists of two staves. The treble clef staff continues the melody with quarter notes C5, B4, and A4. The bass clef staff features a series of chords: a half note chord of G2-B2-D3, a half note chord of G2-B2-D3, a half note chord of G2-B2-D3, a half note chord of G2-B2-D3, a half note chord of G2-B2-D3, and a half note chord of G2-B2-D3. The system concludes with a half note chord of G2-B2-D3.

Exercise 5.3 - Harmonize the following melodies and identify all cadences

Traditional Song "Must I Go?"

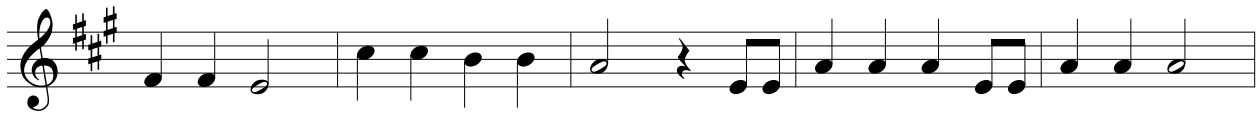
Musical notation for the traditional song "Must I Go?". The melody is written in G major (one sharp) and 4/4 time. It consists of three staves of music. The first staff contains the first eight measures. The second staff contains a repeat sign followed by measures 9 through 16. The third staff contains measures 17 through 24, ending with a double bar line. Several notes are circled in the original image, likely indicating specific harmonic or cadence points.

Traditional Song "Minnelied"

Musical notation for the traditional song "Minnelied". The melody is written in B-flat major (two flats) and 6/8 time. It consists of two staves of music. The first staff contains the first eight measures. The second staff contains the remaining eight measures, ending with a double bar line.

Children's Song "Old MacDonald had a Farm"

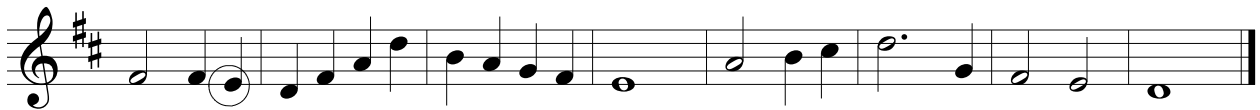
Musical notation for the children's song "Old MacDonald had a Farm". The melody is written in G major (one sharp) and 4/4 time. It consists of a single staff of music containing 12 measures, ending with a double bar line.



Spiritual "Nobody Knows the Trouble I've Seen"



Hymn "Fight the Good Fight With All Thy Might"



Exercise 5.4 - Compose a melody in B major that fits the following scheme:

I IV I V I V I IV V I V I V I

